



## IASC LEVEL 3 EMERGENCY ETC ACTIVATED

April 2015

The ETC provides emergency coordination, security communications, connectivity services, telephony (voice), and customer support in Yemen. The ETC provides shared vital communications services in 10 common operational areas across the country, namely Sana'a, Aden, Hajjah, Ibb, Marib, Taizz, Al Mokha, Al Mukalla, Al Hodeidah, and Sa'ada.

### ETC provides communications services in

- 20** Sites
- 10** Common Operational Areas

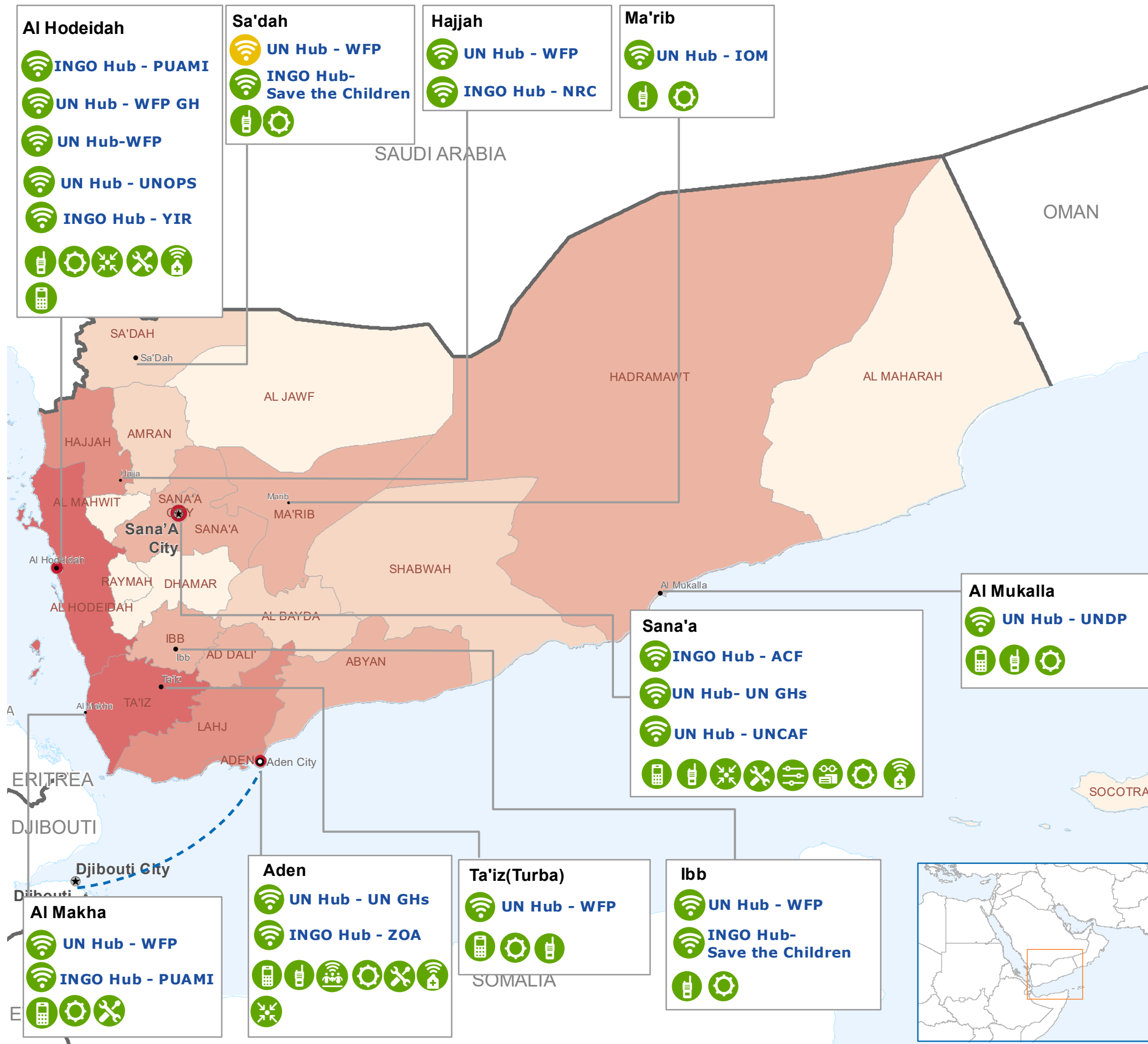
### PARTNER ORGANIZATIONS

**49** supported through the ETC

### 2023 ETC FUNDING APPEAL

**54%** funded out of US\$3.6 million

**ETC Coordinator:** Wali Noor. **IM:** Sarah Eshaq  
**Email:** wali.noor@wfp.org  
 Yemen.ETC@wfp.org  
**For more information:**  
[www.etcluster.org/emergencies/yemen-conflict](http://www.etcluster.org/emergencies/yemen-conflict)



UNDER THE GLOBAL LEADERSHIP OF	Coordination	Security communications (Radio)	Customer Support	Connectivity in COVID-19 centres	National Capital	<b>No. of Humanitarian Organizations</b> <ul style="list-style-type: none"> <li>6 - 16</li> <li>17 - 22</li> <li>23 - 31</li> <li>32 - 39</li> <li>40 - 48</li> </ul>	 0 25 50 km
Information Management	Radio Programming	Assessment Mission	Service Provided	Major Town			
Internet	Telephony	Connectivity for community	Service Planned	Intermediate Town Small Town International boundary Undetermined boundary Governorate boundary			

The designations employed and the presentation of material in the map(s) do not imply the expression of any opinion on the part of WFP concerning the legal or constitutional status of any country, territory, city or sea, or concerning the delimitation of its frontiers or boundaries.

This dashboard is based on the best information available at the time of production. Provision of the services included are dependent upon funding and access conditions. Locations are proposed only and subject to final confirmation with humanitarian partners.

Data sources: WFP, UNGIWG, GeoNames, GAUL, OCHA  
 Prepared by EME HQ GIS

© World Food Programme 2023