

# Midtonia - Logistics Concept of Operations

1. To facilitate the supply of the organisation's humanitarian relief materials to areas in Midtonia most affected by the recent earthquake, the Logistics unit will establish supply routes into Midtonia through:
  - a. Air routes through the Hasselholm International Airport using commercial and/or chartered aircraft;
  - b. Sea routes to the Batumi port, where logistic capacity will be augmented;
  - c. Land routes from the port of Batumi by rail and road through Sergistan, transiting through Falkenberg and discharging in Ullared (Southern Route)
  - d. Land route through Kascia through Linkoping, discharging at Jonkoping (Northern Route),
  - e. Land traffic will take place using Agency's truck fleet which will be brought in.
  
2. Inside Midtonia, deliveries to the affected areas will be carried out by a truck fleet comprised of 100 short haul 10 metric tonnes capacity 6x6 wheel trucks, capable of traversing damaged roads and difficult terrain.
  
3. The truck fleet will load bulk cargo at 2 main entry points for transport to ware-houses:



### Security Situation:

Areas of Concern: Districts of E Skane and Blekinge are in UN security phase 4 due to Universal Spirit Extremist rebel group activities. Other districts (W Skane, Kronoberg, Halland, Jonkoping) are in UN security phase 3.



### Land Use:

Agriculture uses 85% of arable land: With the decline of industrial sector employment in the agricultural sector has almost doubled since 1991 and it now accounts the 43% of employments.



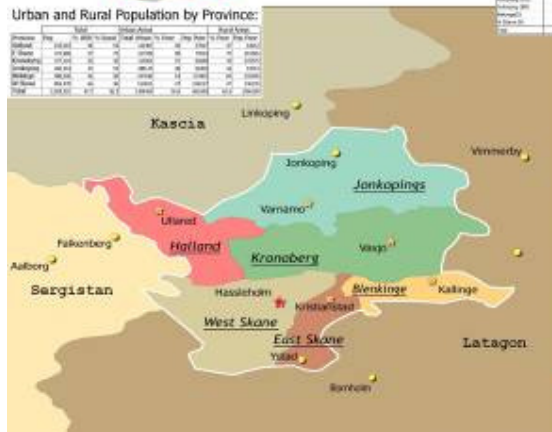
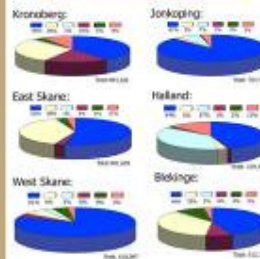
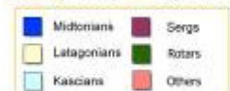
### Refugees and IDPs:

Province	Refugees	IDPs	Total
Midtonia	120,000	180,000	300,000
Latagon	80,000	120,000	200,000
Sergistan	150,000	220,000	370,000
Falkenberg	60,000	90,000	150,000
<b>Total</b>	<b>310,000</b>	<b>410,000</b>	<b>720,000</b>

### Urban and Rural Population by Province:

Province	Urban	Rural	Total
Midtonia	1,200,000	1,500,000	2,700,000
Latagon	800,000	1,200,000	2,000,000
Sergistan	1,500,000	2,200,000	3,700,000
Falkenberg	600,000	900,000	1,500,000
<b>Total</b>	<b>3,100,000</b>	<b>4,100,000</b>	<b>7,200,000</b>

### Ethnicity and Population by District:



- A load point within the grounds of Hasselholm International Airport. No permanent staff is planned. Airrops officer will be located in the Agency Country Office.
  - A load point in the vicinity of Batumi Port at a silo (with milling and bagging capacity for food) and a nearby warehouse for non-food items. This load point / office is already functional and operational and is hosted by the port authorities in Batumi.
  - From the two entry points goods will be trucked to the respective ware-houses;
  - Relief material will be loaded at ware-houses and trucked directly to delivery points;
4. Deliveries of relief cargo to offloading points (locations with concentrations of beneficiaries) will be made by truck convoys. The Rotars' Army will be informed of each convoy's details a minimum of 12 hours ahead of departure for all convoys heading to the East Skane and Blenkinge provinces (*note: details will include vehicle identification (make, model, chassis number, markings, drivers name); cargo description; loading origin; offloading destination; estimated time of departure; waypoint details; and the estimated time of arrival*).
  5. Relief items from humanitarian convoys will be off-loaded at beneficiary locations where they will be handed over to local NGOs and state institutions, such as hospitals and schools, to distribute to identified beneficiaries.
  6. The loading and offloading points will be mapped and the GPS coordinates provided to the National Peace Board (NPB).
  7. The Logistics unit will establish offices at the two entry points as well as at the ware-houses.
  8. This plan has been endorsed by the Midtonian Government at the Prime Ministers Office.

#### **Operational Requirements**

1. Entry points to be endorsed and agreed upon by all involved parties.
2. All involved parties to guarantee safety & security of the relief convoys.