

Background

The Emergency Telecommunications Cluster (ETC) is a global network of organizations including United Nations (UN) agencies, non-governmental organizations (NGOs), private sector companies and governments, that provide technology services that facilitate humanitarian emergency response.

The ETC relies on its network of partners to deliver on its mandate. While the cluster actively seeks to engage new partners, the following partnership principles and criteria apply to all ETC partnerships:

- All partnerships are based on humanitarian principles and must be strictly non-commercial;
- The engaging entity must have an interest in humanitarian assistance and actively contribute to ETC activities at the global and field levels.

Organizations wishing to partner with the ETC should bring a strong spirit of commitment as well as relevant technical expertise and experience that strengthen the cluster.

How to become an ETC partner

The ETC seeks new partnerships to meet specific objectives and to help implement the overall strategy of the cluster. To avoid duplicating efforts, prospective partners should bring new expertise and resources or complement the contributions of existing partners.

An organization interested in becoming an ETC partner should contact the Global ETC team at Global.ETC@wfp.org. The Global ETC team will hold initial conversations with the organization to discuss how the organization can support the Cluster's areas of work.

Prospective partners may identify one or more areas of work where they feel they could make an impact. During initial discussions, the Global ETC team will evaluate an organization's suitability for partnership based on these criteria: the prospective partner's capacity to fulfil a priority area of work, its geographical reach, and its commitment to actively engage with the ETC. Preference will be given to partners that can address priority areas of work.

If an organization is deemed a good fit for ETC partnership, the Global ETC team will conduct a process of due diligence on the organization to ensure that the proposed engagement with the ETC is consistent with humanitarian and/or Inter-Agency Standing Committee (IASC) principles and is free of any conflicts of interest, such as existing commercial agreements.

Organizations proposing a technology solution for the cluster may be requested to demonstrate it to the Global ETC team in a field environment or during an operational exercise. The ETC also encourages prospective partners to submit case studies and examples of previous deployments of the solution in the field.

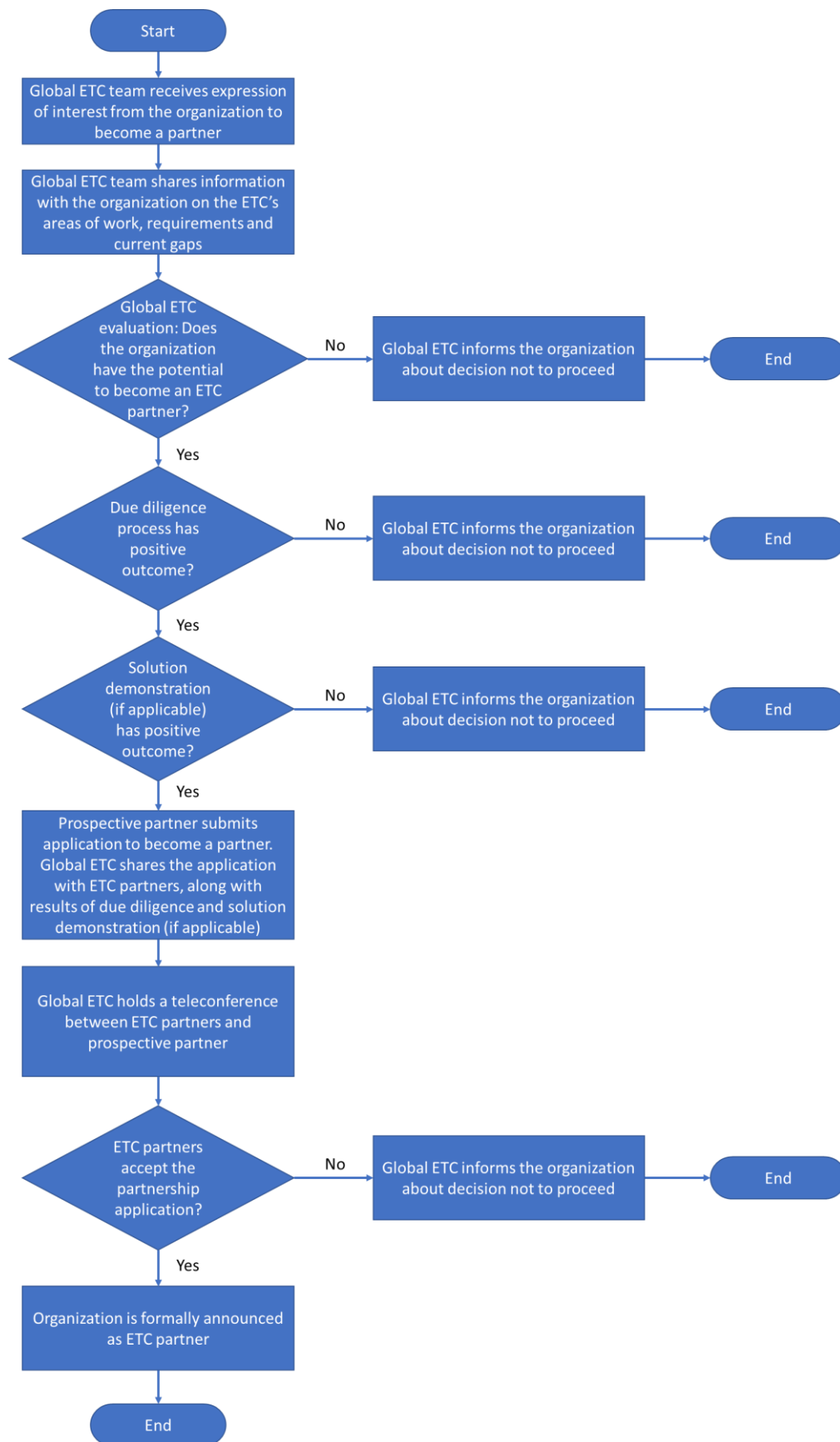
If the due diligence process and solution demonstration (if applicable) result in a positive outcome, the organization will be invited to submit an ETC partnership application form downloadable from www.etcluster.org.

The partnership application will be shared with existing ETC partners along with the results of the due diligence process and technology solution demonstration (if applicable). Within 30 days of applying, the prospective partner will be invited for a conference call to elaborate their application with existing ETC partners. The prospective partner will present their organization, detail their commitment and outline the services and solutions they are offering as well as address questions from ETC partners.

Through an electronic voting process, ETC partners will be asked to accept or reject the prospective partnership application. In the event of a tie, the Global ETC team consults again with partners, and, if necessary, a deciding vote can be cast by the Chair of the ETC. Organizations whose applications are denied will be duly informed by the Global ETC Team.

In the event of a partnership approval, the respective organization is formally invited to become an ETC partner, opening access to ETC activities and plenary meetings. Depending on the nature of their relationship with the ETC, the new partner may need to sign a partnership agreement with the ETC global lead agency, the World Food Programme (for example, in cases of equipment donation and staff deployment).

Simplified process diagram for prospective ETC partners



See next page for the ETC partnership application form.

ETC Partnership application form: *(please fill in and return to global.etc@wfp.org)*

1. Name of organization: _____

Street address of organization headquarters: _____

2. Number of staff (*approximate*): _____

3. Organization focal point (*for this partnership request*):

- Name: _____
- Role/title in organization: _____
- Email address: _____
- Phone: _____
- Location (city, country): _____

4. Brief description of organization background: *(please state when your organization was formed, the organization's mandate, website URL, and any other information to help the ETC understand the organization better)*

5. Category of organization (please circle):

- United Nations Agency
- Non-Governmental Organization (NGO)
- Government
- Private Sector
- Academia
- Other (*please specify*):

6. What does your organization want to contribute to the ETC network and how? *(how will your organization's partnership complement or increase the ETC's capacity)*

7. Key services / products relevant to the ETC: *(in your response, please consider the ETC's areas of work and requirements, including geographical coverage - if applicable)*

8. Is there anything else you think the ETC should know?

Please email your expression of interest to global.etc@wfp.org.

Thank you,

Global ETC

