

**ETC  
COLLABORATION  
WITH PARTNERS**

**2019**

**JAN**

**VOICE &  
DATA CONNECTIVITY**  
in the **CENTRAL  
AFRICAN REPUBLIC**



Ericsson Response and the Government of Luxembourg deploy equipment to provide connectivity services in Batangafo.

**FEB**

**TELECOMMUNICATIONS  
SECURITY  
STANDARDS (TESS)**



Within the TESS project, the ETC is represented by the Government of Luxembourg, Save the Children, MSB and World Vision International.

**MAR**

**SATELLITE  
COMMUNICATION  
TRAINING**



Crisis Connectivity Charter signatory Hispasat conducts a training in Spain.

**DISASTER  
CONNECTIVITY  
MAPS**



The Disaster Connectivity Maps initiative is first discussed at the Global Forum for Emergency Telecommunications [GET-19]. ITU, NetHope, WFP and the Global ETC team have been involved in this initiative.

**TABLETOP  
SIMULATION  
EXERCISE**



The Tabletop Simulation Exercise, jointly developed by ITU and the Global ETC team, is delivered for the first time at the Global Forum for Emergency Telecommunications [GET-19] in Mauritius.

**ETC  
COORDINATION  
COURSE  
2019**



The first ETC Coordination Course, funded by the Government of Luxembourg, hosted by WFP and co-facilitated by UNHCR and WFP, is delivered in Italy.

**CYCLONES  
IDAI & KENNETH  
in MOZAMBIQUE**



Ericsson Response, the Government of Luxembourg, ITU, MSB, NetHope, Télécoms Sans Frontières, WFP and Crisis Connectivity Charter signatories Eutelsat, Inmarsat and SES mobilise to provide emergency telecommunications services in Mozambique.

**APR**

**LAUNCH of ICT  
COUNTRY  
PROFILES**



The new ETC website is launched, featuring ICT Country Profiles developed with the support of the U.S. Department of State.

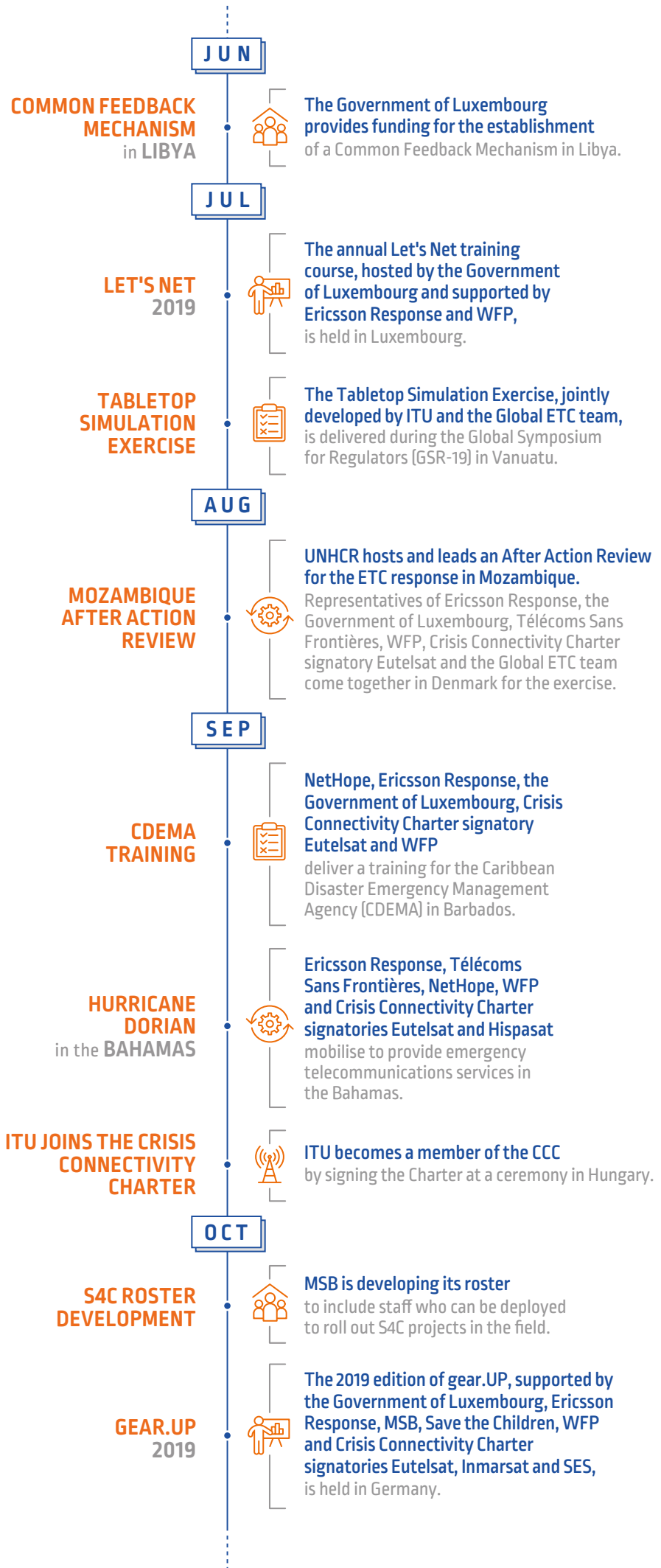
**ETC PLENARY  
MEETING &  
OPEN DAY**



ETC Partners come together for the Annual ETC Plenary Meeting and Open Day, hosted by WFP in the United Arab Emirates.



**ETC**  
COLLABORATION  
WITH PARTNERS



**ETC  
COLLABORATION  
WITH PARTNERS**

**OCT**

**TABLETOP  
SIMULATION  
EXERCISE**



The Tabletop Simulation Exercise, jointly developed by ITU and the Global ETC team, is delivered during an ITU Workshop in Switzerland.

**NOV**

**S4C  
RETREAT**



Ericsson Response, the Government of Luxembourg, MSB, NetHope, OCHA and UNHCR come together in Italy to finalise the updated S4C Service Portfolio.

**PREPAREDNESS  
in MOZAMBIQUE**



MSB deploys a Stand-by Partner to support Country Preparedness in Mozambique for three months.

**CYBERSECURITY  
WORKSHOP**



Ericsson Response, the Government of Luxembourg, Plan International, UNHCR, UNICEF, World Vision International and WFP support the development of an ETC Cybersecurity Strategy by participating in a workshop in Italy.

**CRISIS  
CONNECTIVITY  
CHARTER MEETING**



CCC signatories Global Eagle, Eutelsat, Hispasat, Intelsat, SES and ITU come together in Italy to discuss lessons learned from the first activations of the Charter, as well as the the future of the CCC.

**2020**

**JAN**

**S4C  
in the CENTRAL  
AFRICAN REPUBLIC**



The Government of Luxembourg provides funding to support the roll-out of Services for Communities in CAR.

**FEB**

**SATELLITE  
COMMUNICATION  
TRAINING**



Crisis Connectivity Charter signatory Hispasat conducts a simulation in Panama.

**ETS NETWORK  
DESIGN  
in BANGLADESH**



Ericsson Response and NetHope contribute to the design of the data network in Cox's Bazar.

**MAR**

**LAUNCH of the  
ITU-ETC EMERGENCY  
TELECOMMUNICATIONS  
TABLE TOP  
SIMULATION GUIDE**



The guide, jointly developed by ITU and the Global ETC team, is published.



# ETC COLLABORATION WITH PARTNERS

ARP

**CYCLONE HAROLD**  
in the PACIFIC



**Crisis Connectivity Charter signatories Inmarsat and Intelsat make their services available for local partners in Fiji and Vanuatu to be able to respond to the emergency, despite being unable to ship equipment due to the COVID-19 pandemic.**

**LAUNCH of the CYBERSECURITY TASK FORCE**



**The members of the task force are UNICEF, the Government of Luxembourg, ITU, World Vision International, Ericsson Response and WFP (Chair).**

**COVID-19 PARTNER MAPPING**



**The Global ETC team conducted a resource mapping exercise to prepare for a potential scale-up or response to COVID-19 using local capacity.**

Action Contre la Faim, Ericsson Response, the Government of Luxembourg, MSB, Save the Children, Télécoms Sans Frontières, UNHCR, UNICEF, World Vision International and WFP's resources have been mapped; while partners NetHope, ITU, ICRC, IOM, Plan International and the U.S. Department of State remain prepared to support.

MAY

**COVID-19 CHATBOT PROJECT**





**Ericsson Response is supporting the implementation of the S4C Chatbot project with one volunteer supporting the Global ETC team remotely.**

**DEVELOPMENT of the LET'S COMM TRAINING COURSE**



**The Government of Luxembourg and WFP are supporting the development of the new Let's Comm training course. The Government of Luxembourg has made one Stand-by Partner available to support this project remotely.**

-  Connectivity
-  Operations
-  Preparedness
-  Services for Communities
-  Global ETC
-  Security communications
-  Capacity building

