

Tonga

Global ETC Teleconference #5

Date: 09/02/2022 Time: 06:00 UTC

All information related to ETC operations can be found on the website:

<https://www.etcluster.org/emergency/tonga-volcanic-eruptionsunami>

For more information or to be added or deleted from the mailing list please contact:

Pacific.ETC@wfp.org

Attendance

Chair	Caroline Teyssier	UAE
Ambassador of Tonga to UAE	Ambassador A'kau'ola	UAE
APT	Jongbong Park	Thailand
China Meteorological Administration	Yong Qing Chen	China
Cisco Crisis Response	Joseph Harrison	USA
ECHO	Olivier Brouant	Thailand
Fiji NDMO	Shinya Abe	Fiji
French Embassy in Fiji	Francois-Xavier Leger	Fiji
ITU	Paul Hamilton	Hungary
	Walid Mathlouthi	USA
	Ashish Narayan	Thailand
OCHA	Lepani Benijamini Vunituraga	Fiji
TSF	Sebastien Latouille	France
UNESCO	Jiuta Korovulavula	Fiji
UNHCR	Min Sun	Australia
UNOPS	Ffion Conlon	Thailand
USAID	Marc Dominianni	USA
WFP	Omar Namaoui	Algeria
	Salma Farouque	Australia
	Patricia Facultad	Italy
	Clara Aseniero	Italy
	John Dovale	New Zealand
	Oscar Coleman	Thailand
	Andrew Henze	Thailand
	Ozdzan Hadziemin	UAE
	Aramais Alojants	UAE
	Elizabeth Millership	UAE

WHO
World Bank
World Vision International

Hassene Sidatt
Shivnesh Roynendra Prasad
Mark Mitchell

Philippines
Fiji
UK

Agenda

1. Situation update
2. Global ETC update
3. Partner updates

Minutes

1. Situation update

- There is anecdotal evidence from partners on the ground that CS Reliance, dispatched to repair the severed undersea communications cable in Tonga, is on track to fully repair the cable by 20 February. The ETC in the Pacific is seeking confirmation with counterparts in Tonga.

2. Global ETC update

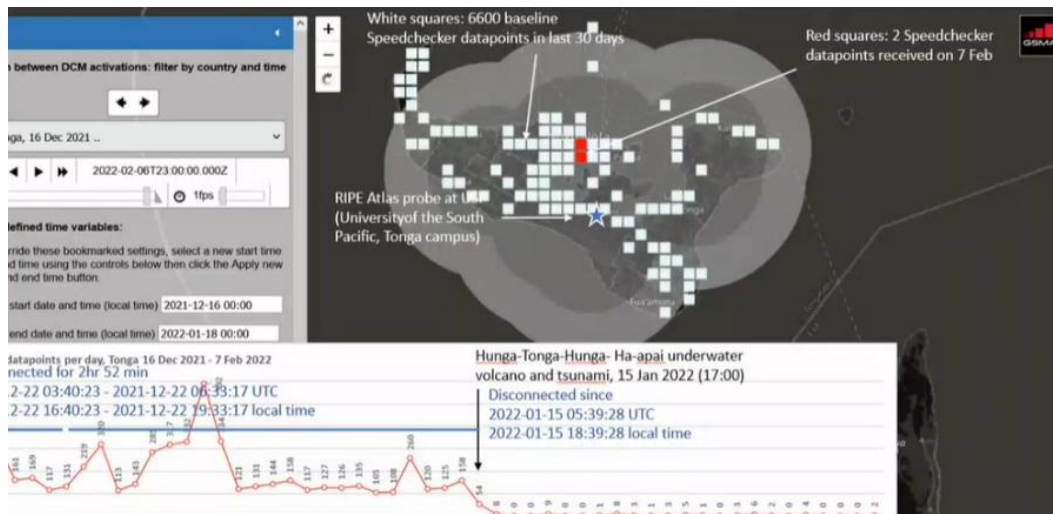
- Three satellite phones dispatched by WFP in Fiji were released from quarantine in Tonga on 4 February. The satellite phones have been activated and issued to key stakeholders in the Tongan government, including the Prime Minister, the deputy Prime Minister, and the head of the Ministry of Meteorology, Energy, Information, Disaster Management, Environment, Climate Change and Communications (MEIDECC), to facilitate critical information sharing and coordination of the response.
- Three portable BGAN terminals for connectivity have been released from quarantine in Tonga. One BGAN terminal has been activated for use by the Tonga National Emergency Management Office (NEMO). The two remaining terminals are awaiting activation for humanitarian coordination purposes by staff in the UN Resident Coordinator's Office (RCO) in Nuku'alofa and the other to support operations identified by NEMO on the ground. All three terminals are pre-loaded with data provided by Télécoms Sans Frontières (TSF).
- The pre-configured VSAT connectivity kits deployed by the University of the South Pacific (USP) was scheduled to be released from quarantine in Tonga today (9 February). When released, the satellite equipment will be set up in the USP campus in Nuku'alofa to provide a common communications area for responders to communicate internationally. It is estimated the activation will take place over the next few days.
- Two 'flyaway' VSAT connectivity kits provided by the Government of Luxembourg await shipment to Tonga (via the landing stage in Brisbane) from the UAE. Additional supporting equipment (two satellite modems) have been shipped by the Government of Luxembourg to the UAE to be included in the consignment, which is scheduled to depart on 18 February.
- NEMO in Tonga has requested support to set up a High Frequency (HF) radio network in six locations to enable more effective communications with the outer islands of Tonga. The ETC in the Pacific is working to source the required equipment and resources with partners.

- The Pacific Humanitarian Team (PHT) is planning to open a window of opportunity for a limited time period to deploy international personnel to support the emergency response in Tonga. The ETC in the Pacific has been asked to put forward information on a technical profile required for the response. Based on current needs, the ETC in the Pacific is seeking a suitable profile to support additional assessments leading up to the potential inter-island HF radio solution requested by NEMO, as well as possible support needed to activate the Government of Luxembourg VSAT kits, when they are received in country.

3. Partner updates

International Telecommunication Union (ITU)

- **Disaster Connectivity Map (DCM):** ITU continues to map the status of connectivity in Tonga. There has been no significant change observed over the past week, indicating no significant recovery of connectivity services. Almost all data points are found on the main island of Tongatapu.
- The map below shows the presence of connectivity on Tongatapu before the eruption (white dots) and after the eruption (red dots), captured on 7 February 2022. The data sources used to collate the DCM map does not currently pick up on connectivity through wi-fi.
- The [RIPE Atlas probe](#) based in the University of the USP campus in Nuku'alofa has remained offline since the eruption. This status may change, once the USP VSAT terminal is set up in the campus.



- Six satellite phones sent by the ITU and three SIM cards (to equip the three WFP satellite phones already in Tonga) are under customs clearance in Sydney, Australia, awaiting onward shipment to Brisbane and then Tonga. All nine devices are credited with pre-paid airtime by Iridium.
- Intelsat and the ITU regional office in the Pacific continue to provide data connectivity services to the Tonga Meteorological Services in Fua'amotu International Airport (at 14 mbps) via a prepositioned satellite connectivity terminal and are working with partners on the ground—Intelsat and Spark—to expand the service.

The next teleconference meeting will be held on Wednesday 16 February 2022 at 06:00 UTC

06:00 UTC
07:00 Rome
10:00 Dubai
13:00 Bangkok
19:00 Nuku'alofa/Auckland

Acronyms

APT	Asia Pacific Telecommunity
BGAN	Broadband Global Area Network
DCM	Disaster Connectivity Map
DFAT	Department of Foreign Affairs and Trade
ECHO	European Civil Protection and Humanitarian Aid Operations
ETC	Emergency Telecommunications Cluster
HF	High Frequency
ITU	International Telecommunication Union
MEIDECC	Ministry of Meteorology, Energy, Information, Disaster Management, Environment, Climate Change and Communications
NDMO	National Disaster Management Office
NEMO	National Emergency Management Office
OCHA	Office for the Coordination of Humanitarian Affairs
PHT	Pacific Humanitarian Team
RCO	Resident Coordinator's Office
TSF	Télécoms Sans Frontières
UAE	United Arab Emirates
UNESCO	United Nations Educational, Scientific and Cultural Organization
UNHCR	United Nations High Commissioner for Refugees
UNOPS	United Nations Office for Project Services
USAID	U.S. Agency for International Development
USP	University of the South Pacific
UTC	Coordinated Universal Time
VSAT	Very Small Aperture Terminal
WFP	World Food Programme
WHO	World Health Organization
WMO	World Meteorological Organization
WVI	World Vision International

Minutes: Elizabeth Millership, Global ETC Information Management & Communications Officer